



**Model Number**

**ODV120-F200-R2**

Stationary multicode read device for all common 1D, 2D and Pharmacodes at speeds of 10 m/s, X VGA resolution, Ethernet

**Features**

- 10 m/s motion speed
- 30 scans per second
- All common 1D or 2D codes can be read
- Integrated error image memory
- Code quality index output

**Function**

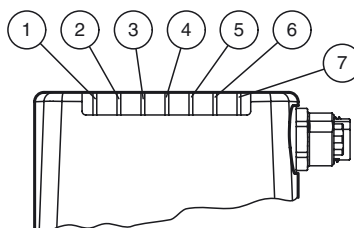
The stationary reading device is an optical identification system for reading up to 26 several code symbology. With its high-performance signal processor, a partial image capture function, and optimized decoding algorithms, the device features extremely high reading speeds.

The stationary reading device can be configured easily and quickly using a normal web browser via the standard Ethernet interface. The reading device also features an integrated error image memory.

Typical areas of application are

- Document handling
- Printing machines
- Identification in the packaging and warehouse sector
- PCB identification

**Indicating / Operating means**



1	LED DIAG2	yellow
2	LED DIAG1	yellow
3	LED POWER	green
4	LED READY	yellow
5	LED BAD	yellow
6	LED GOOD	yellow
7	LED TRIGGER	yellow

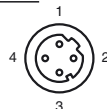
**Electrical connection**

**RS 232**



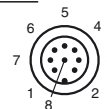
Pin	Signal
1	+UB
2	TX RS232
3	GND
4	RX RS232
5	NC

**LAN**



Pin	Signal
1	TX+ Ethernet
2	RX+ Ethernet
3	TX- Ethernet
4	RX- Ethernet

**24 V DC+IO**



Pin	Signal
1	IN Trigger
2	+UB
3	OUT Good
4	OUT Bad
5	IN 1
6	OUT 1
7	GND
8	OUT Matchcode

Release date: 2013-03-28 11:54 Date of issue: 2013-03-28 253058\_eng.xml

**Technical data****General specifications**

Light type	Integrated LED lightning (white)
Symbologies	Maxi Code, PDF 417, Data Matrix, QR Code, MicroPDF 417, GoCode, UCC Composite, Aztec Code, Code 39, Code 128, UPC, EAN, JAN, Int 2 of 5, Codabar, Code 93, UCC RSS, POSTNET, PLANET, Japanese Post, Australia Post, Royal Mail, RM4SCC, KIX Code, Codablock, Pharmacode
Approvals	CE
Read distance	80 ... 200 mm Depending on code symbology
Depth of focus	± 60 mm
Reading field	max. 110 mm x 70 mm
Modul size	≥ 0.2 mm
Sensor principle	Camera system
Evaluation frequency	up to 30 Hz
Target velocity	triggered ≤ 10 m/s
Data Matrix	
Symbol size	rectangular up to 144 x 144 modules rectangular up to 16 x 48 modules
Data format	ASCII, C40, Text, X12, Edifact, Base 256 , all according to ISO 646
Orientation	omnidirectional

**Nominal ratings**

Camera	
Type	CMOS , Global shutter
Number of pixels	752 x 480 pixels
Gray scale	256
Image recording	real-time , Program-controlled or triggered externally

**Functional safety related parameters**

MTTF <sub>d</sub>	40.5 a
Mission Time (T <sub>M</sub> )	8 a
Diagnostic Coverage (DC)	0 %

**Indicators/operating means**

Operating display	LED green: Ready for operation
LED indicator	for good/poor reading

**Electrical specifications**

Operating voltage	U <sub>B</sub>	24 V DC ± 15% , PELV
No-load supply current	I <sub>0</sub>	max. 250 mA
Power consumption	P <sub>0</sub>	6 W

**Interface**

Interface type	serial , RS 232
Transfer rate	max. 115.2 kBit/s
Cable length	max. 30 m

**Interface 1**

Interface type	Ethernet
Protocol	TCP/IP
Transfer rate	100 MBit/s
Cable length	max. 30 m

**Input**

Input voltage	to be applied externally 24 V ± 15% PELV
Number/Type	Trigger, permanent trigger, teach match code
Input current	approx. 10 mA at 24 V DC
Switching threshold	low: < 10 V, high: > 15 V
Cable length	max. 30 m

**Output**

Number/Type	GOOD, BAD, Matchcode
Switching type	PNP
Switching voltage	to be applied externally 24 V ± 15 % PELV
Switching current	100 mA each output
Cable length	max. 30 m

**Ambient conditions**

Ambient temperature	0 ... 45 °C (32 ... 113 °F)
Storage temperature	-20 ... 60 °C (-4 ... 140 °F)

**Mechanical specifications**

Protection degree	IP65
Connection	8-pin, M12x1 connector, standard (supply+IO) , 5-pin, M12x1 socket, standard (RS 232) , 4-pin, M12x1 socket, standard (LAN)
Material	
Housing	PC/ABS
Installation	4 x M6 threading
Mass	approx. 160 g

**Compliance with standards and directives**

Standard conformity	
Noise immunity	EN 61326-1

**Accessories****V19-G-2M-PUR-ABG**

Female cordset, M12, 8-pin, shielded, PUR cable

**V1SD-G-2M-PUR-ABG-V45-G**

Connection cable, M12 to RJ-45, PUR cable 4-pin, CAT5e

**V1SD-G-2M-PUR-ABG-V45X-G**

Connection cable, M12 to RJ-45, PUR cable 4-pin, CAT5e

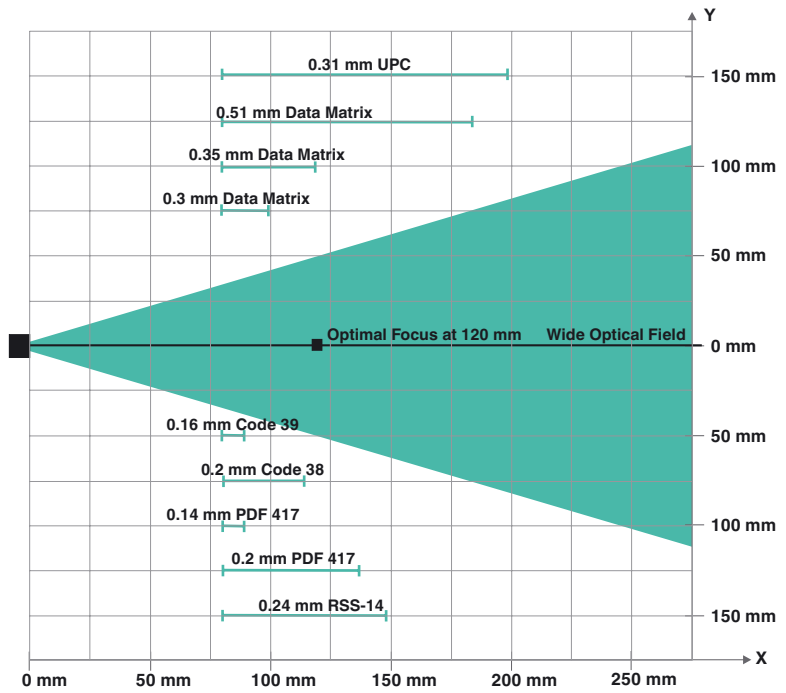
**V15S-G-5M-PUR-ABG**

Male cordset, M12, 5-pin, shielded, PUR cable

Additional accessories can be found in the Internet.

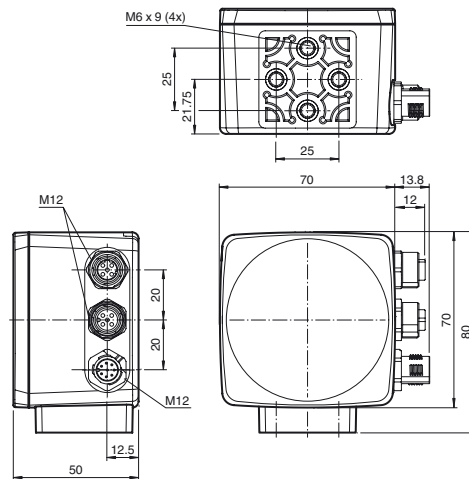
Emitted interference	EN 61000-6-4
Protection degree	EN 60529
Laser class	IEC 60825-1:2007

### Read range for various symbologies



Note: Smallest symbology that can be read is 0,14 mm PDF417

### Dimensions



Release date: 2013-03-28 11:54 Date of issue: 2013-03-28 253058\_eng.xml